

LEADERS IN STEEL DISTRIBUTION AND VALUE-ADDED PROCESSING

Established in 1921, Horan Steel is a privately owned company that has an excellent reputation as an extremely reliable, robust and well established leader in the Distribution and Value-Added Processing of Quality Steel Products.

We service many areas of NSW from our two purpose built, state-of-the-art warehouse and processing service centres strategically located in Wetherill Park, Sydney and Mayfield West, Newcastle.



EXTENSIVE PRODUCT RANGE

Our product range includes:

- Structural Steel
- Beams
- Columns
- Channels
- Pipe
- Painted SHS/RHS
- Galvanised SHS/RHS
- Semi-Bright ERW Tube
- Merchant Bar
- Flats
- Equal and Unequal Angles
- Squares
- Rounds
- Duragal® Profiles
- Plate
- Floor Plate / Checker Plate
- Laser Plate
- Wear Plate
- High Tensile Plate
- Hot Rolled Sheet
- Galvanised Sheet
- Mesh
- Numerous other Speciality Steel Products

WORLD CLASS PROCESSING FACILITIES

Our wide range of value-added processing facilities are a key part of our 'one-stop-shop' service offer, including:

- Fibre Optic Laser Cutting
- High-Definition Plasma Cutting
- Drilling, Tapping, Counter-Sinking, Counter-Boring, Beveling and K-Beveling of Plate
- Beam Line for Drilling and Sawing
- Coping Lines with High Definition Plasma Cutting, Drilling and Milling
- Angle Line and Flat Bar Processing and Punching
- High Speed Precision Straight, Mitre and Bundle Cutting Saws



IMPECCABLE CUSTOMER SERVICE

We understand the importance of fulfilling our Customer's needs, especially with respect to:

- Sales Team 6.30am – 5.30pm
- Fast Responsiveness and Flexibility
- Reliable On-Time Deliveries
- Excellent Stock Availability
- High Quality Products
- Compliance to Australian Standards
- Value Added Processing
- 'One-Stop-Shop'

CONTACT DETAILS

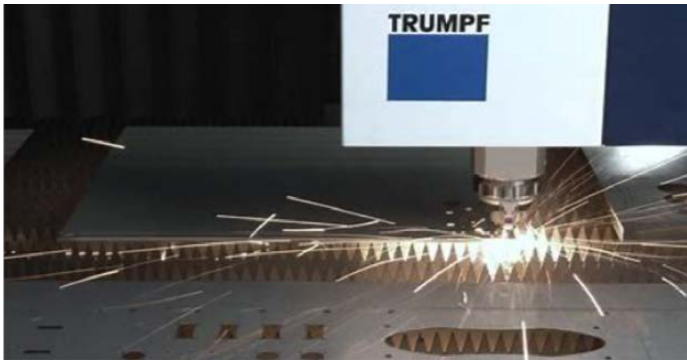
SYDNEY (02) 9203 1111
sydney@horansteel.com.au

PROCESSING (02) 9203 1111
processing@horansteel.com.au

NEWCASTLE (02) 4967 9888
newcastlesales@horansteel.com.au

PROFILING (02) 9203 1155
sales@horanprofile.com.au

LASER CUTTING OF SHEET AND PLATE



- **High Speed Fibre Laser**
- **Bed size:** 4 m long x 2 m wide
- **Standard Thickness Range:** 3, 4, 5, 6, 8, 10, 12, 16, 20 & 25mm (Other thicknesses by enquiry)
- **Identification can be etched onto individual parts**

EXAMPLES



Gears



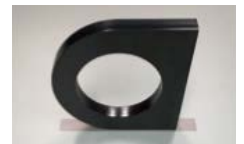
Components



Architectural



Apertures



Brackets



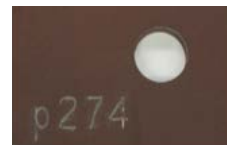
Fabrication Pieces



Cleats



Intricate Fonts & Precision Cutting

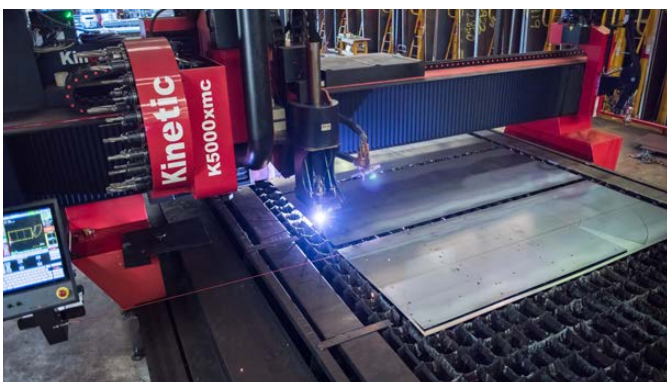


Etched Part Numbers & Hole Sizes



Very Small Signage

HIGH DEFINITION PLASMA CUTTING, OXY CUTTING AND DRILLING OF PLATE



- **High Definition Plasma Cutting:** up to 60mm thick
- **Cutting Bed Size:** 30 m long x 3.5 m wide
- **Drilled Holes Diameter Range:** 8 – 100 mm
- **Tapped Holes**
- **Counter-Sunk and Counter-Bored Holes**
- **Bevelled Edges and K-Bevelled Edges**
- **Pin Stamping Identification of individual parts**



EXAMPLES



Drilled, Tapped & Counter-Bored Holes With Bevelled Edge



High Definition Plasma Cut 'Gears'



Counter Sunk-Hole in High-Tensile Wear Plate

BEAM LINE

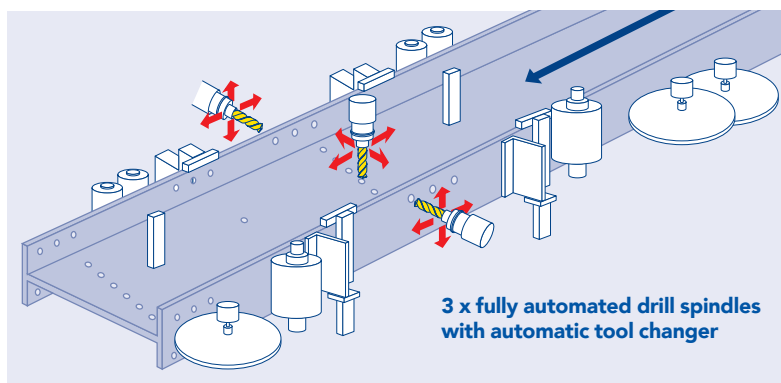
Our Beam Line drills and cuts a wide range of steel products.

- **Products:** Universal Beams
Universal Columns
Channels
RHS/SHS Sections
Equal and Unequal Angles
- **Maximum Width:** 1000mm wide
- **Maximum Length:** 18 metres long
- **Drilled Holes:** 10 – 40 mm in diameter
- **Mitre Cutting:** Up to 60 degrees
- **Scribed identification on individual parts**
(Please see the table overleaf for product details)

The 'Drilling Machine' on Horan Steel's Beam Line has three independent drill cartridges capable of drilling holes from 10mm to 40mm in diameter.

Each of the three drill cartridges has a fully automated tool-changer capable of holding 4-5 drills.

Dimensional accuracy is obtained by utilising vertical and horizontal clamps/vices, under web support, and quadruple measuring discs.



ANGLE AND FLAT BAR LINE

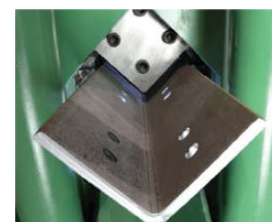
Our Angle and Flat Bar Line can punch a range of different holes, slots and shapes into Equal Angles, Unequal Angles and Flat Bar.



- **Minimum Angle Size:** 40mm x 40mm x 5mm
- **Maximum Angle Size:** 150 mm x 150mm x 16mm
- **Flat Bar Thickness Range:** 5 – 16mm
- **Flat Bar Width Range:** 50 – 150mm
- **Part numbers can be stamped onto individual parts**

Products that can be processed include:

- Clip Angles and Cleats
- Wind Tower and Transmission Tower Components
- Angle Bracing and Fly Bracing
- Grain Handling / Conveyor processing
- Agricultural Components
- Shear Tabs and End Caps
- Web Stiffeners and Angle Connections
- Splice Plate Connections
- Water Tank Components



COPING LINE AND COMBINED COPING, DRILLING AND MILLING MACHINES

We have two coping lines providing us with the flexibility of coped product or coped, drilled and milled product. Both machines use 'State of the Art' High-Definition Plasma Cutting Torches on a six-axis robotic arm. Both machines are capable of cutting almost any architectural shape or design.



Coping Line



Combined Coping, Drilling and Milling Machine

- **Products:** Universal Beams
Universal Columns
Channels
RHS/SHS Sections
Equal and Unequal Angles

- **Maximum Width:** 1000mm wide

- **Maximum Length:** 18 metres long

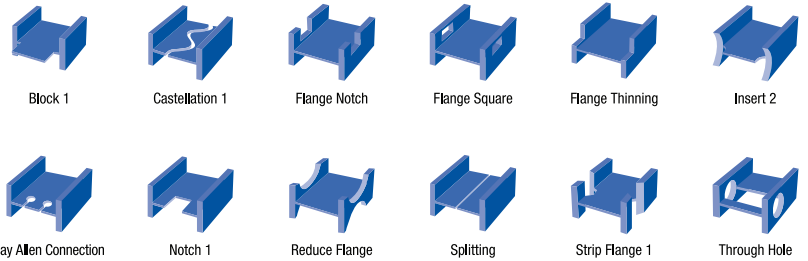
- **Scribed identification by Argon torch on individual pieces**



EXAMPLES

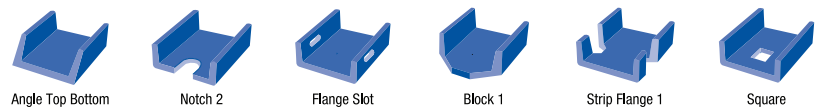
Universal Beams and Columns

All sizes



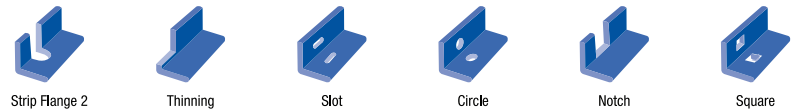
Channels

Min 75mm



Equal and Un-Equal Angles

Min 75mm



RHS/SHS Hollow/ Tubular Sections

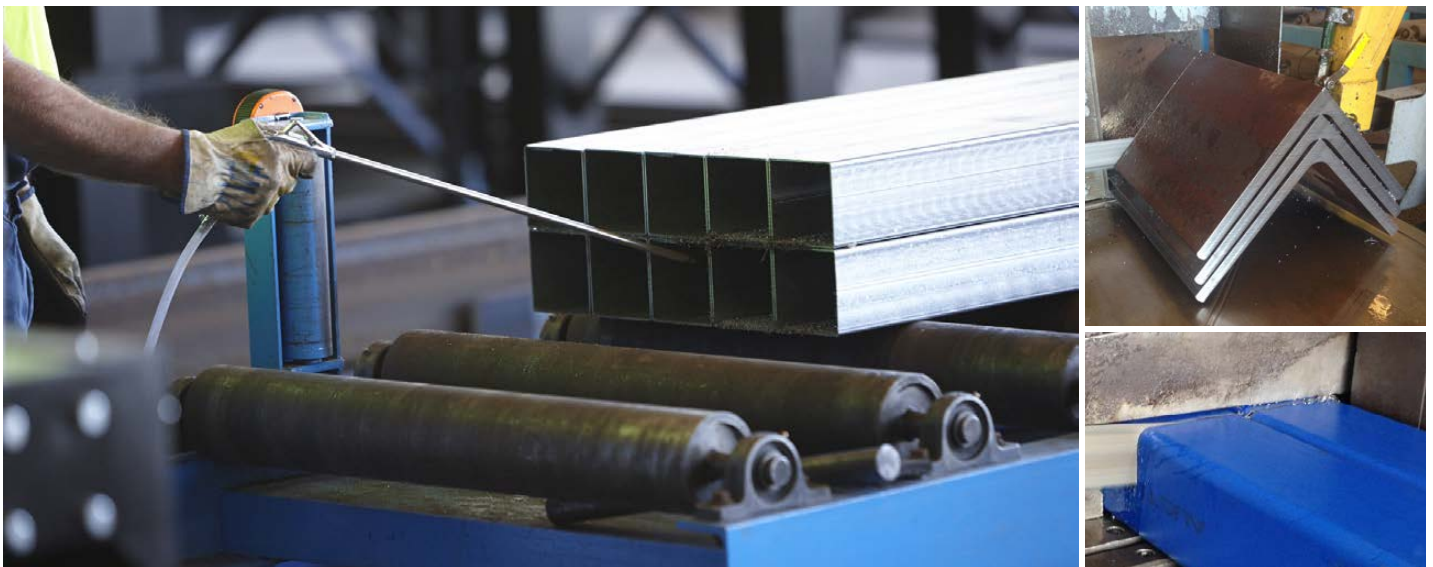
Min 75mm



HIGH SPEED PRECISION SAWS

We also have a range of specialist High Speed Straight-Cutting, Mitre-Cutting and Bundle-Cutting Saws.

- **Products**
 - Universal Beams
 - Universal Columns
 - Channels
 - RHS/SHS Sections
 - Equal and Unequal Angles
 - Pipe
 - Tube
 - Merchant Bar
 - Flats
 - Angles
 - Rounds
 - Squares
- **Mitre Cutting** Up to 60 degrees
- **Maximum Width** 610 mm
- **Maximum Height** 600 mm
- **Dimensional accuracy is achieved by having up to three horizontal and three vertical clamps / vices**



COURTEOUS ON-TIME DELIVERIES

We have an extensive fleet of trucks that provide a safe, professional and courteous on-time service when delivering products to our customers throughout many parts of NSW.

Our Drivers are a key part of the service that we provide to our customers.



BEAM LINE AND COPING LINE PROCESSING SPECIFICATIONS

		BEAM LINE (High Speed Drill and High Speed Mitre Cutting Saw)		COPING LINE (High Definition Plasma Cutting Torch on a Robotic Arm)	
		Min	Max	Min	Max
Beams & Columns	Width	100	1010 (90°) 900 (45°) 650 (60°)	100	1010
	Height:	50	500	50	430
	Web thickness:	5	50	5	25
	Flange thickness:	7	50	7	50
Channels	Width:	100	380	75	380
	Height:	40	100	40	100
	Thickness:	5	20	5	20
Equal & Un-Equal Angles	Width:	100	300	75	400
	Height:	100	300	50	400
	Thickness:	5	35	4	25
Rectangular and Square Hollow Sections (RHS & SHS)	Width:	100	400	75	300
	Height:	100	400	75	300
	Thickness:	3	40	2.3	16
Holes, Slots, Penetrations & Shapes		Standard drill sizes = 16, 18, 22 & 24 mm. Non Standard drill sizes range from 10 – 40mm on enquiry.		Almost any shape or hole is possible with our Plasma Coping Technology on enquiry	

How to Contact Us

SYDNEY

Telephone: 02 9203 1111

Email:

sydneysales@horansteel.com.au

or

processing@horansteel.com.au

165 Newton Road
Wetherill Park NSW 2164

NEWCASTLE

Telephone: 02 4967 9888

Email:

newcastlesales@horansteel.com.au

24 Spit Island Close
Mayfield West NSW 2304

PROFILING

Telephone: 02 9203 1155

Email:

sales@horanprofile.com.au

165 Newton Road
Wetherill Park NSW 2164